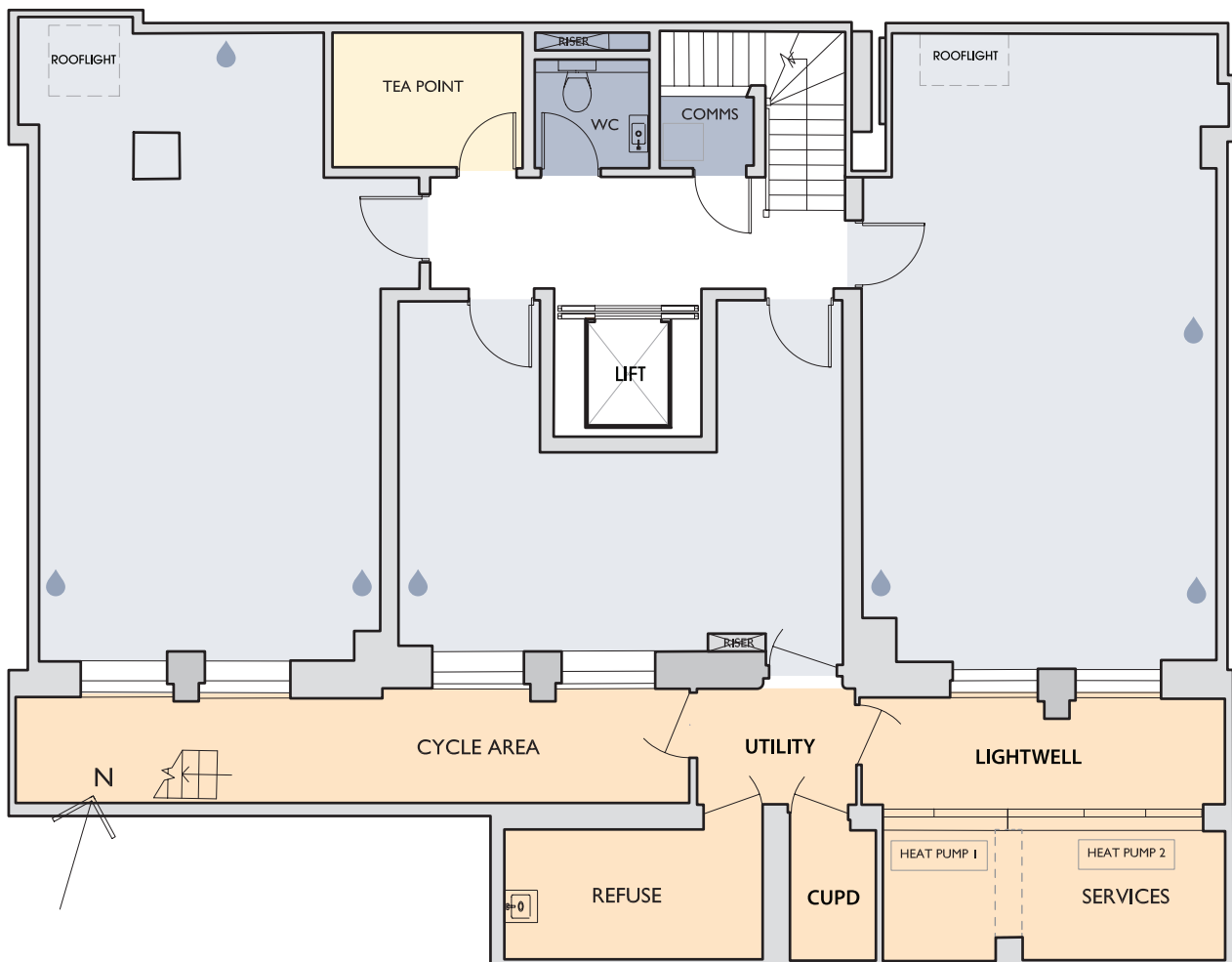


55 NEW CAVENDISH STREET LONDON W1

LOWER GROUND FLOOR : 1,117 SQ FT / 104 SQ M

NOTE: all areas are approximate and will be verified on completion in accordance with rics Code of Measuring Practice.

💧 CAPPED OFF WATER, DRAINAGE AND ELECTRICITY FOR HAND BASINS



NEW CAVENDISH STREET

Claire Kennedy
m: 07970 034 238
t: 020 7290 0970
claire.kennedy@hdwe.co.uk

Emma Fayers
m: 07703 728 434
t: 020 7290 0970
emma.fayers@hdwe.co.uk

Sarah Walsh
m: 07747 488 780
t: 020 7290 0970
sarah.walsh@hdwe.co.uk

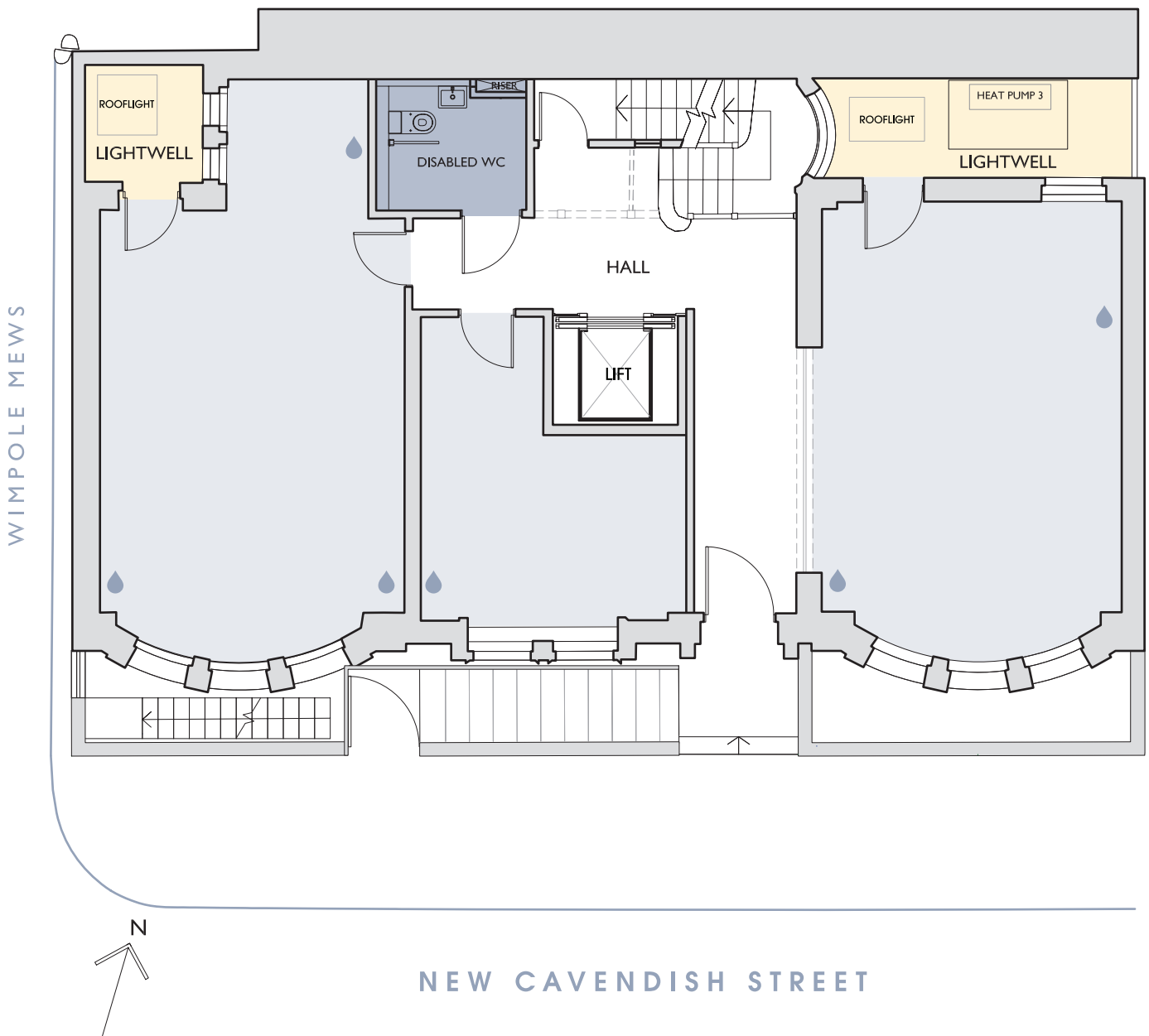
**THE
HOWARD
deWALDEN
ESTATE**
www.hdwe.co.uk

55 NEW CAVENDISH STREET LONDON W1

GROUND FLOOR : 958 SQ FT / 89 SQ M

NOTE: all areas are approximate and will be verified on completion in accordance with rics Code of Measuring Practice.

💧 CAPPED OFF WATER, DRAINAGE AND ELECTRICITY FOR HAND BASINS



Claire Kennedy
m: 07970 034 238
t: 020 7290 0970
claire.kennedy@hdwe.co.uk

Emma Fayers
m: 07703 728 434
t: 020 7290 0970
emma.fayers@hdwe.co.uk

Sarah Walsh
m: 07747 488 780
t: 020 7290 0970
sarah.walsh@hdwe.co.uk

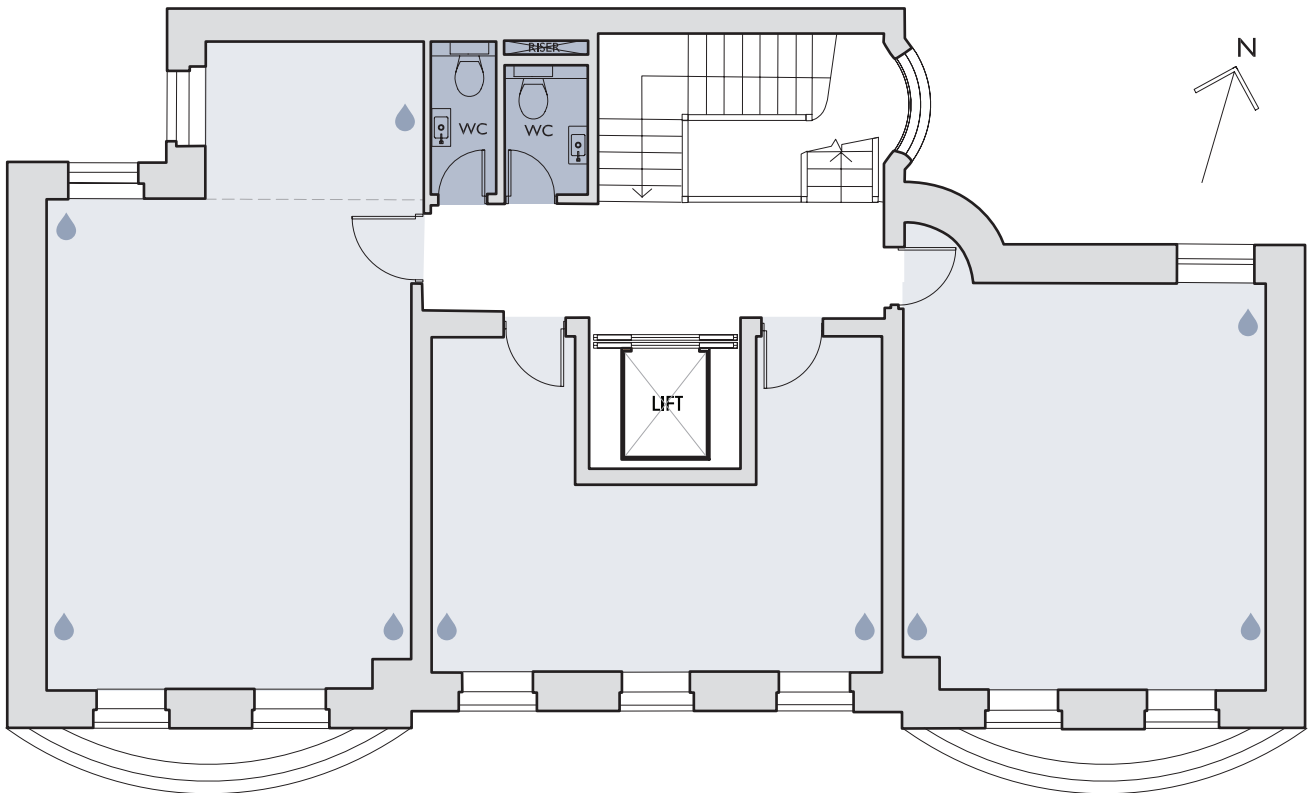
**THE HOWARD
deWALDEN
ESTATE**
www.hdwe.co.uk

55 NEW CAVENDISH STREET LONDON W1

FIRST FLOOR : 984 SQ FT / 91 SQ M

NOTE: all areas are approximate and will be verified on completion in accordance with rics Code of Measuring Practice.

💧 CAPPED OFF WATER, DRAINAGE AND ELECTRICITY FOR HAND BASINS



NEW CAVENDISH STREET

Claire Kennedy
m: 07970 034 238
t: 020 7290 0970
claire.kennedy@hdwe.co.uk

Emma Fayers
m: 07703 728 434
t: 020 7290 0970
emma.fayers@hdwe.co.uk

Sarah Walsh
m: 07747 488 780
t: 020 7290 0970
sarah.walsh@hdwe.co.uk

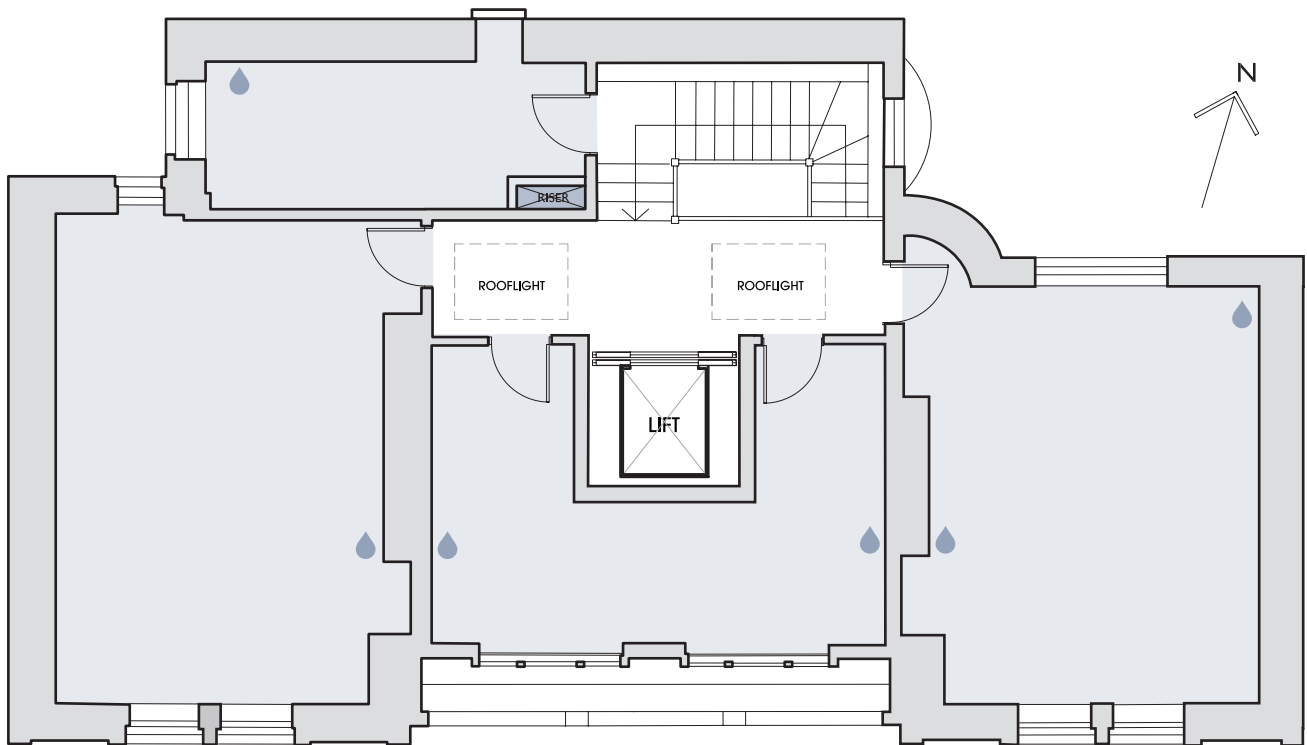
**THE
HOWARD
deWALDEN
ESTATE**
www.hdwe.co.uk

55 NEW CAVENDISH STREET LONDON W1

SECOND FLOOR : 865 SQ FT / 80 SQ M

NOTE: all areas are approximate and will be verified on completion in accordance with rics Code of Measuring Practice.

💧 CAPPED OFF WATER, DRAINAGE AND ELECTRICITY FOR HAND BASINS



NEW CAVENDISH STREET

Claire Kennedy
m: 07970 034 238
t: 020 7290 0970
claire.kennedy@hdwe.co.uk

Emma Fayers
m: 07703 728 434
t: 020 7290 0970
emma.fayers@hdwe.co.uk

Sarah Walsh
m: 07747 488 780
t: 020 7290 0970
sarah.walsh@hdwe.co.uk

**THE
HOWARD
deWALDEN
ESTATE**
www.hdwe.co.uk